

CH34X USB-SERIAL DRIVER INSTALLATION INSTRUCTIONS

Version: V1.0

Copyright (C) Jiangsu Qinheng Co., Ltd.

Support System:

OS X 10.9 and above

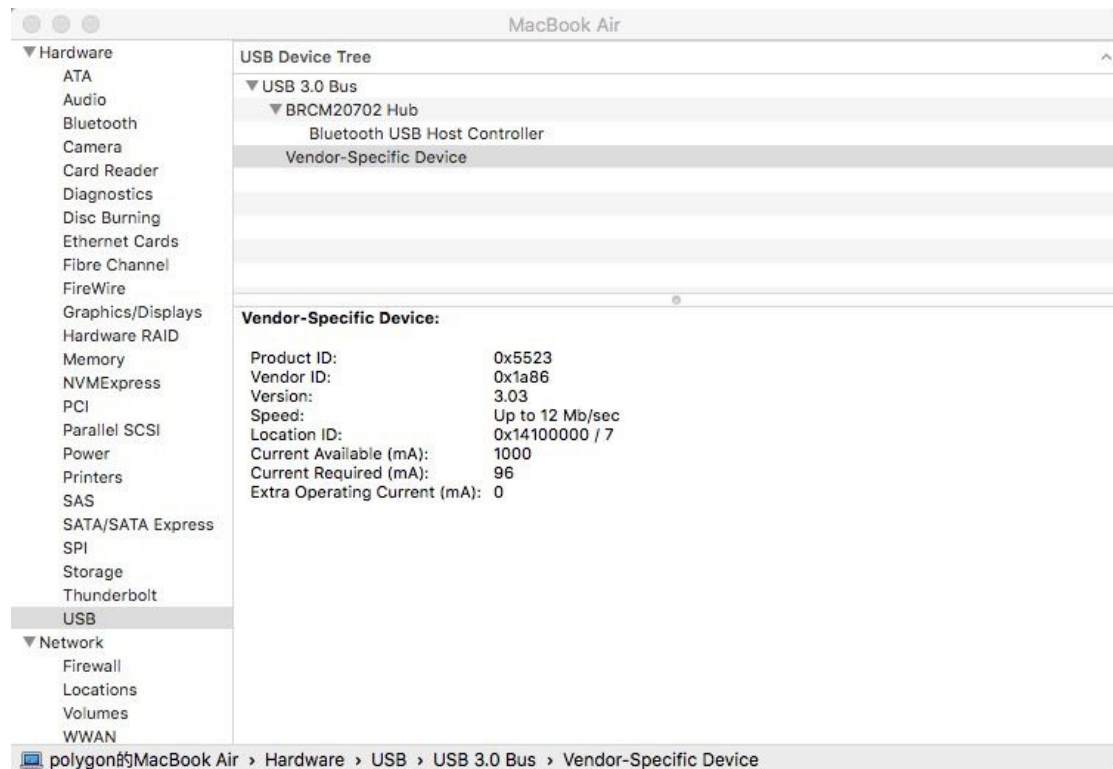
Installation Process:

- unzip the file to a local installation directory
- Double-click CH34x_Install.pkg
- Install according to the installation instructions
- Restart after finishing installing

After the installation is completed, you will find serial device in the device list(/dev/tty.wchusbserial*), and you can access it with serial tools.

If you can't find the serial port, you can follow the steps below:

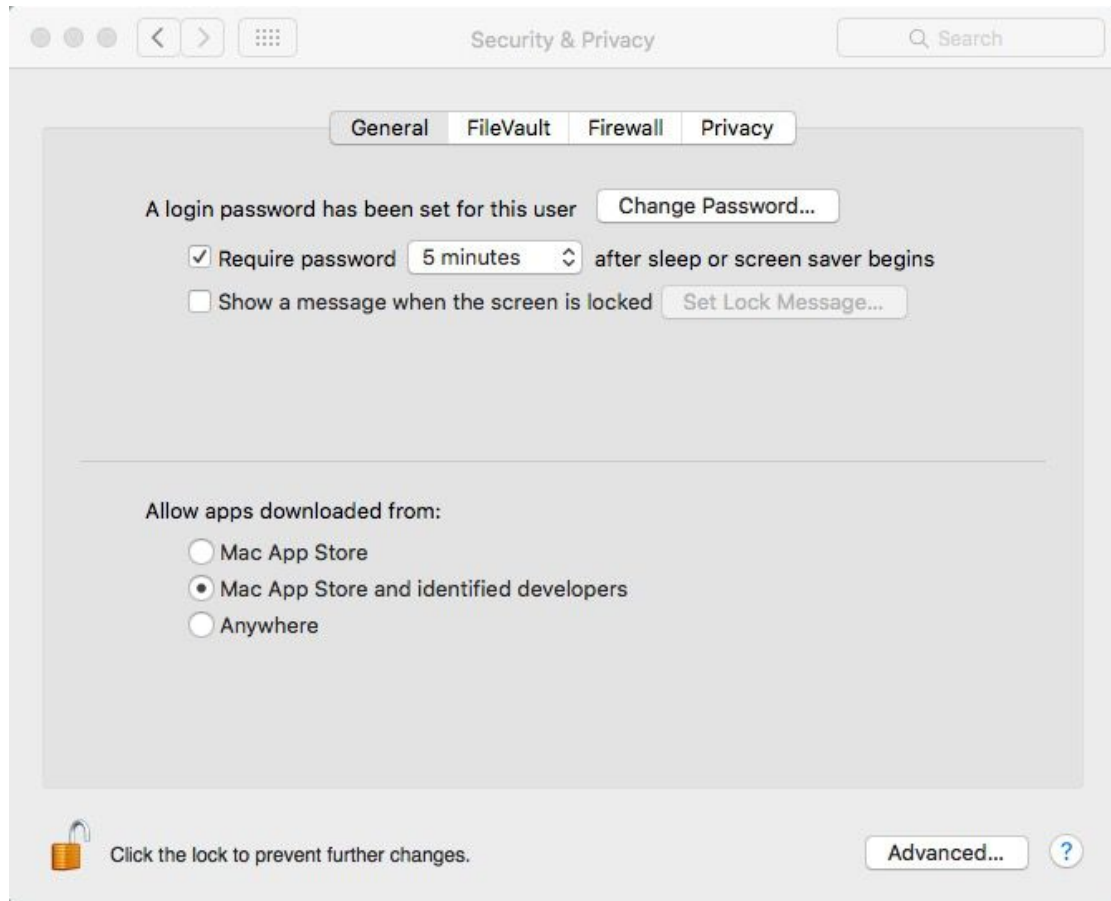
1. Open terminal and type 'ls /dev/tty*' and then you will see devices like tty.wchusbserial;
2. Open 'System Report' -> Hardware -> USB, the right side is "USB Device Tree" there will be device named "Vendor-Specific Device" and check if the Current is normal.



If the steps below don't work at all, please follow the installation steps and try again.

Note:

1. Please enter “System Preferences”->”Security & Privacy”->”General” page, below the title ”Allow apps downloaded from:” you should choose the choice 2->”Mac App Store and identified developers” so that our driver will work normally.



2. If old version of unsigned driver is now existing in your PC, please uninstall it first. Open Application “Terminal” and type commands below step by step:

<1> “sudo su” and input your password;

<2> “rm -rf /System/Library/Extensions/usb.kext”;